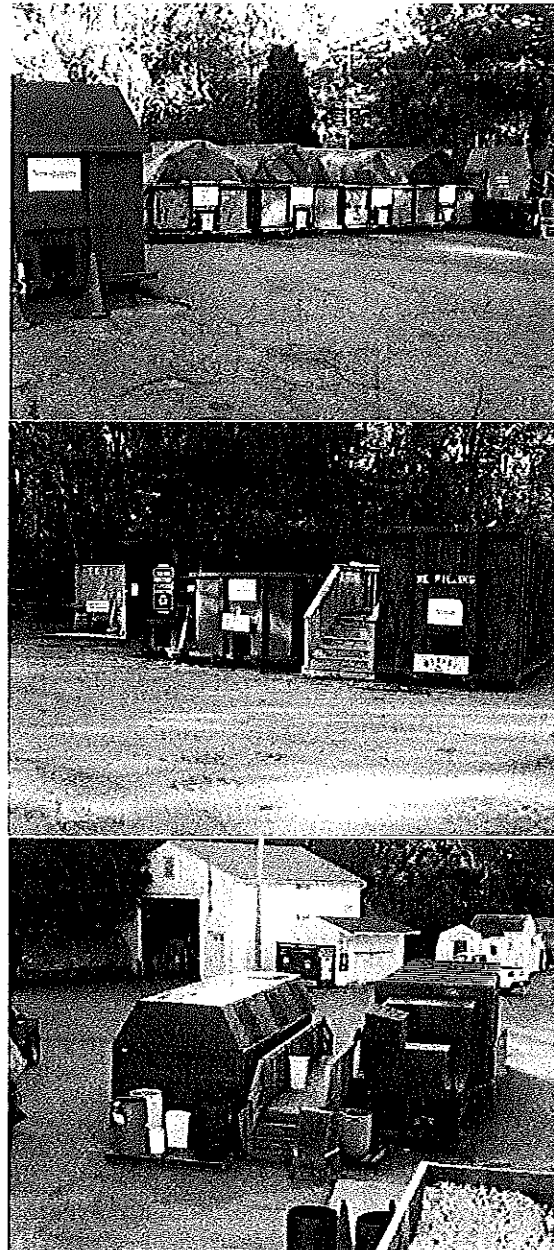


Guide to Recycling

Material	What to Recycle	How to Prepare
Cardboard	Corrugated boxes	Flattened bring to bailer, No packaging material
Newspaper	Newspaper	Clean and dry, no plastic
Mixed Paper	Junk mail, Shredded paper, Cereal boxes	Clean and dry, Secure shredded paper, no plastic, No Christmas paper
Clear & Colored Glass	Bottles and jars, No drinking glasses, or ceramics or mirrors	Separate Clear from Colored glass, rinsed and no caps
Tin/ Aluminum Cans	Food cans emptied, aerosol cans, Aluminum pie plates and foil	Rinsed
Aluminum	Aluminum lawn furniture, windows frames, doors etc.	Remove all glass and plastic
Scrap Metal	Steel, Copper, Brass etc. Wire, mufflers, bikes, Lawn mowers	Drain all Fluids
Plastics #1	Drinking Bottle	No plastic bags, Please remove caps
Plastics #2	Transparent milk jugs, Colored bottles detergent	No caps and no white plastic, For the colored plastics caps ok
Plastics #3-#7	Containers	No plastic bags, No Styrofoam
Non Numbered Plastics	We put items in the bags so that they do not fly around facility	IF you want to recycle film (plastic bags) bring to the supermarkets
Rigid/ Bulky Plastics	Baby Pools Laundry basket Etc.	No metal, or fabric
Styrofoam	Packaging peanuts and blocks, Food and coffee containers	Keep clean Separate packaging from food - foam

All these items are separated, bailed and shipped to Auburn, Fitchburg, Franklin, Worcester and around the world to be processed for re-use.
Thank you for Recycling



Postal Patron
Sturbridge, MA 01566

Sturbridge Board of Health
301 Main St.
Sturbridge, MA 01566



Breakneck Rd.
Sturbridge, MA 01566

Tuesday, Thursday & Saturday
7 AM to 2:45 PM

Household Hazardous Waste Every Third
Saturday 10 AM – 2 PM
(Closed for the Winter months Dec./Jan./Feb.)

Open to all Sturbridge Residents
with a sticker permit.

New or replacement stickers available
at the Board of Health office M – F 9am – 12noon
or at the Recycling Center Tuesdays and Thursdays
or by self-addressed envelope to:
BoH, 301 Main St., Sturbridge, MA 01566

For more information visit our website.

Contact Board of Health

Web: www.town.sturbridge.ma.us
visit

Board of Health then click
Frequently asked Questions

Email: boardofhealth@town.sturbridge.ma.us
Phone: 508-347-2504

Printed on 50% recycled content paper

Permit#29

The Green Trash Bag

Pay-As-You-Throw (PAYT) program started
October 1, 2011

Trash: Must be in the Town Green PAYT bags.
Bags are available at local stores.
MickNuck's, Fred's, Shaws and
Stop & Shop.

Cost: Bags are sold in rolls of five
Large- (30 gallon) bags \$1 per bag, will cost
\$5. per roll
Small – (13 gallon) bags \$.50 per bag, will cost
\$2.50 per roll
No mark up. No sales tax.

Why do we have this program?

The Board of Health decided after careful
consideration, public hearings, and a vote,
to start putting aside money for the landfill
capping. This is a fair program that is paid for
by the residents that use the landfill.

**Each household's trash disposal cost
is based on how much is thrown away.
Households that recycle more and
produce less trash, pay less.**

Recycling Center / Landfill Permit Stickers

All Sturbridge residents are eligible for this
permit. Renewal stickers can be obtained the
first two Saturdays in April, after which they
will be direct mailed to the address provided
last year. New Applicants may obtain
applications on-line and mail in information
to the Board of Health office, 301 Main St.,
Sturbridge, MA 01566 or visit the Board of
Health office 9:30 - 12:30.

Items accepted at the center, with a permit
sticker, at NO additional costs are:

Take it or Leave it Shed items	Clothes and Shoes
Basic recyclables- paper, plastic, glass, cans	Scrap metal
Yard waste	Styrofoam – packaging, peanuts, coffee cups, insulation, to go containers
Motor Oil	Batteries- Car & household

The following fees are due at the time of disposal

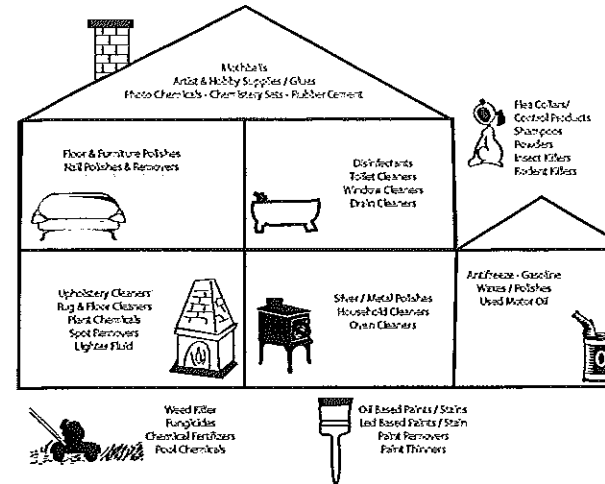
Appliances /Air conditioners/ refrigerator/ microwaves	\$10
Burnable – All small bags \$3 all large black bags \$5 up to 50 lbs..... same fees as C &D, material taken to Wheelabrator waste to energy facility in Millbury, MA	Depending On Amount
Construction and Demolition (C&D) taken to Auburn then to a processing facility Bag size \$3 & 5 up to 50 lbs., Trunk load \$15, Small SUV \$25, Pickup \$35, Large pickup \$45. Add \$10 for side boards □ ton \$50, □ ton \$75 1 ton \$100 (Pilot has a scale for use for \$10)	Depending on Amount
TV/Electronics – anything with a plug or chip, additional fee over 36"	\$10
Furniture- chair \$5 to \$10 Sofa \$10	\$5 - \$10
Mattress/box springs- twin \$10, Large \$ 15	\$10 - \$15
Propane Tanks up to 100 lbs...	\$2
Tires- \$2 off rim, \$3 w/rim under 17 " over 17" \$6 off rim, \$16 w/rim no tires over 22"accepted	\$2 - \$16
Wood – wood furniture and wood scraps, no attachments of metal, plastic or fiber. Same fees as C&D, material taken to FCR in Auburn, MA	Depending on Amount

Sharp Container- container available for medical human and pet needles, price includes disposal	\$10
---	------

Large items will not be accepted
without proper separation,
all prices subject to change.

Household Hazardous Waste

March - November 3rd Sat. of the month
10 Gallon Max per visit



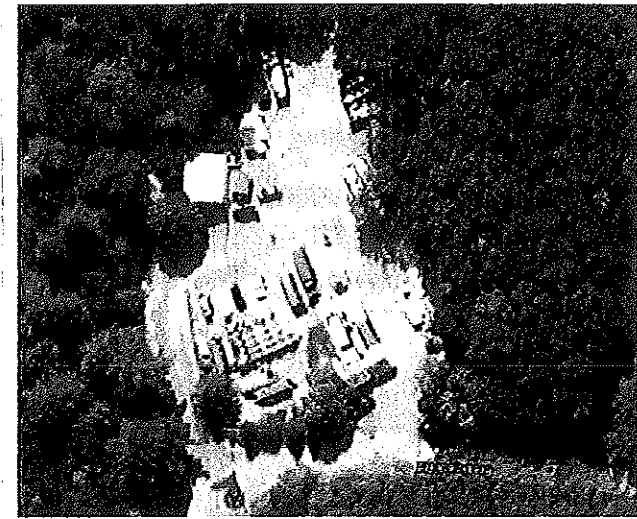
Latex Paint

Latex paint is not hazardous, do not put in the
Hazardous waste it costs us \$\$\$\$. Please share
it, use it up, or dry it up. Instructions for proper
latex paint disposal: empty liquid latex paint
into double bagged container mix one part
paint to two parts clay kitty litter, stir allow to
dry. Bagged paint/kitty litter combo when it
becomes a solid, dispose into household trash.
Properly emptied paint cans are accepted; the
dry, empty cans with lids removed may be
given to the Recycling Center attendant
at the entrance gate.

Wood Recycling



Wood furniture, Scrap
wood recycling.
This container does not
accept logs or creosote
treated wood
Small fee applies.



Directions to Recycling Center & Landfill

From Town Hall: Take Haynes Street (RT 15)
to the Mobil Station.
Turn left onto Mashapaug Rd.
Turn right onto Breakneck Rd.
Travel about 1.5 miles to end and the
Recycling Center at end.

These projects are funded in part
by a grant from Massachusetts
Department of Environmental
Protection; which included
technical assistance time, initial
PAYT bags, the wood container
and this mailer.

